

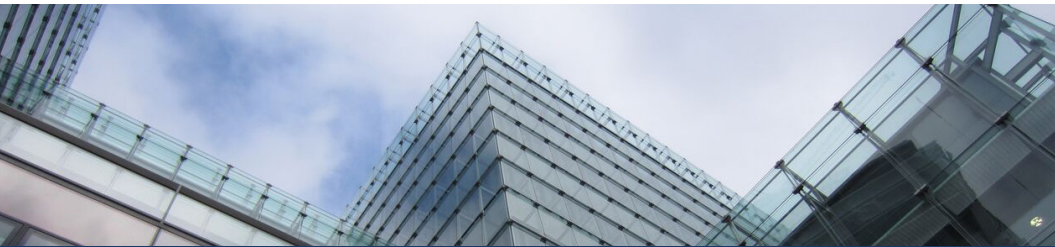


ENVIRONMENTAL SITE ASSESSMENT

REAL ESTATE DUE DILIGENCE HEALTH AND SAFETY ENVIRONMENTAL ENGINEERING ENERGY EFFICIENCY



INTERNATIONAL



SERVICES

- ◆ Phase I Environmental Site Assessments
- ◆ Subsurface Investigations (Phase II ESAs)
- ◆ Feasibility (Preliminary) Studies
- ◆ Remedial Action Work Plans
- ◆ Soil & Groundwater Remediation Oversight & Reporting
- ◆ Groundwater Monitoring Well Installation & Sampling
- ◆ Brownfield Development
- ◆ Environmental Permitting

Service Overview

Environmental Site Assessments (ESA) are conducted to identify potential environmental concerns related to on-site and off-site activities. Nova's phased approach to this process allows our clients to maximize the information obtained while minimizing costs.

Typical Environmental Site Assessment activities include:

- ◆ Review of topographic/geologic/hydrogeologic information pertaining to the site and surrounding area
- ◆ Review of historical land use activities at the site
- ◆ Review of regulatory information
- ◆ Site reconnaissance
- ◆ Surrounding property observation

Experience

Nova field professionals and team leaders have extensive experience conducting and managing Environmental Site Assessments for private clients, banks, and government agencies all over the world. Our employees are trained to conduct and review Phase I investigations in accordance with ASTM E 1527-13 standards and expanded scopes. Nova staff have a strong understanding of facility operating systems, national regulations and guidelines, and fate and transport of chemicals through air, soil, surface water, and groundwater. Additionally, we have staff trained in specific areas of expertise who are available to consult as needed.



Jim Gott
Director, UK and European Region

Mr. Gott is a civil and structural engineer with over 20 years of experience in the environmental engineering property assessment market. During this time, he has assisted many international companies with acquisition and divestiture projects, and has led brownfield site assessment and redevelopment projects.

Phone: +44(0)-203-542-0702 | Email: Jim.Gott@novaconsulting.com



CASE STUDY

Summary:

Nova was retained by a logistics developer to undertake an ESA at a 50-acre former manufacturing plant. The site had been used as a steel mill for steel processing. The project involved the review of numerous historic documents and existing site investigations showing that residual contamination was present at the site. Nova assessed the magnitude of risk posed by the contaminate, identified data gaps, and undertook a site investigation to fully characterize the environmental condition of the site.

Highlights:

- ◆ Nova worked closely with the developer and vendor by attending meetings and being part of the client's bid team.
- ◆ Nova filled the data gaps and undertook assessment of the site liabilities, remediation options, and likely costs.
- ◆ Nova further worked with debt funders that were financing the project to ensure that the site was assessed to an institutional standard.

